

#80

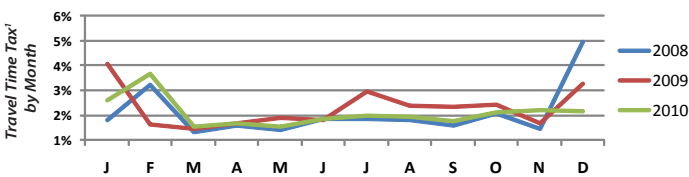
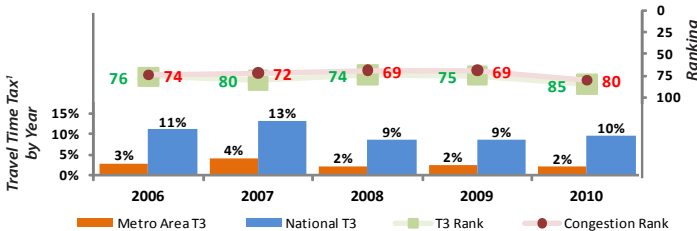
Albany Metropolitan Area

National Congestion Rank: #80

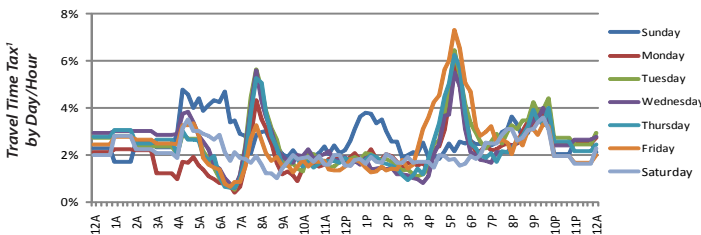
—1% of Peak Period² Congestion of Nation's Worst Metro Area (L.A.)

Population Rank: #58 (858,000)

Trends for Peak Period² Congestion in Metro Area



Patterns for 2010 Congestion in Metro Area



What Was the Worst Time? Friday, 5:15-5:30 PM [7% Travel Time Tax¹]



CBSA⁴: Albany-Schenectady-Troy NY

Impact of Employment Changes

	Total Employment		Change		Travel Time Tax ¹		Change	
	2006	2010	Total	%	2006	2010	Total	%
Metro Area	453 K	439 K	-14 K	-3.1%	2.8%	2.1%	-0.7%	-26.6%
Top 100 Metros	93.3 M	87.9 M	-5.4 M	-5.8%	11.1%	9.7%	-1.4%	-12.7%
National	136.9 M	130.7 M	-6.2 M	-4.5%	N/A			

Congested Corridors and Bottlenecks

across Metro Area in 2010

Congested Corridors⁵ (0 Total in Metro Area)

Bottlenecks (0 Total in Metro Area)

- Notes:**
- 1 – **Travel Time Tax** is the percentage of extra travel time (vs. "free flow") a random trip takes in the specific region and time period analyzed. A 10% tax means 10% additional trip time due to congestion.
 - 2 – **Peak hours** are Monday to Friday, 6 to 10 AM and 3 to 7 PM.
 - 3 – **"Hours of Congestion"** is defined as times of the week when a road segment's average hourly speed is half or less than its uncongested speed.
 - 4 – **CBSA** stands for "Core Based Statistical Area," the official term for a functional region based around an urban center of at least 10,000 people, based on standards published by the U.S. Government's Office of Management and Budget (OMB).
 - 5 – **Corridors** are composed of multiple contiguous bottlenecks totaling at least 3 miles in length.

Additional information on the methodologies used in this report are available at <http://scorecard.inrix.com>.